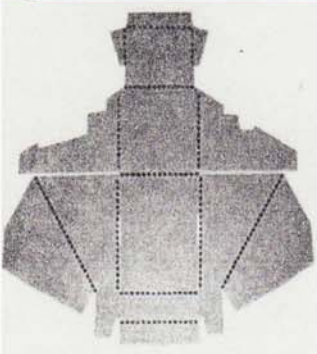
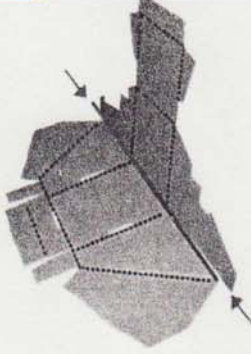


Folding & Assembly Instructions
LARGE (2-Tier) Countertop Display
Holds 28 Playbooks



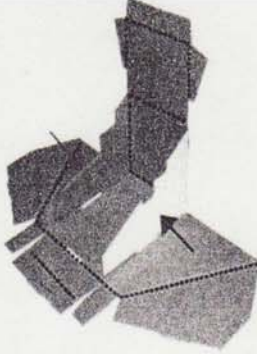
1

Fold the display in half.



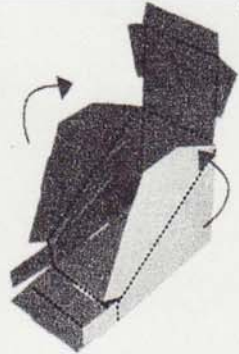
2

Fold in side flaps.

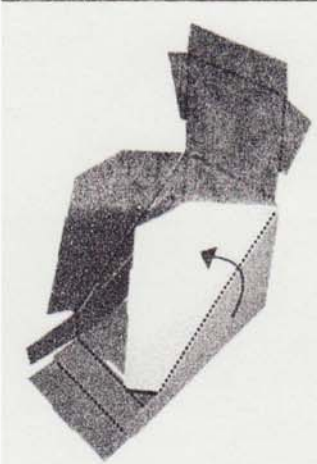


3

Fold up side panels.



4



Fold over left flap.

5



Fold over right flap.

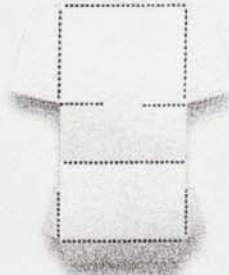
6



Fold in tabs and then fold the front lip up and over the tabs.

7

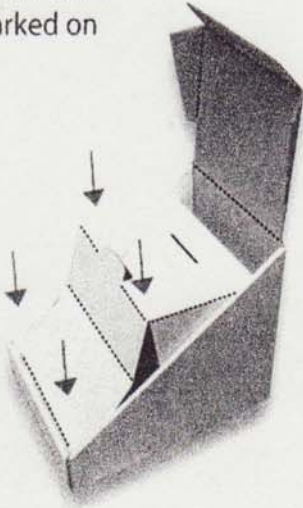
To install tier:



Locate tier insert.

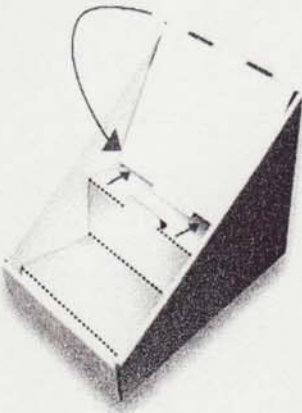
8

Place Insert in tray with sides folded in as marked on image:



9

Then fold down the top panel so it locks into position.



10

Insert Header

